

CORPORATE BROCHURE

GENERATE MORE REVENUE
REDUCE LANDFILL COSTS



Contents

04	M&K
06	Why Choose M&K?
08	Exporting quality globally since 1977
10	Core Competencies
12	Process & Product Design
14	Supporting Customers
16	Long term commitments to provide customers with sustainable value
18	Facilities
20	Quality inherent in our processes
22	Uncompromising customer service
24	Long Term Performance
26	Improving your business
27	Asset Worth Every Penny
28	Health, Safety & the Environment
30	Product Offerings
32	Yorwaste: MSW, C&I, C&D, SRF
34	ReCyco: Co Mingled
36	Greyhound: RDF
38	Yorwaste: 3D Co Mingled
40	Bolton Bros: C&I
42	Grundy: C&D (c/w Trommel Fines Treatment)
44	FCC Environment: RDF, Wigan
46	Spotmix: Residual C&I
48	Lancashire Waste Recycling: SRF
50	FCC Environment: RDF, Liverpool

We Supply Reliability

- We pride ourselves in our commitment to our customers and in the level of service offered
- We work closely with customers to ensure we meet their expectations
- Our objective is to keep our customer’s business operations running as smoothly as possible on a day to day basis

M&K

Reliability & Efficiency

M&K have been pioneers in the design, manufacture, installation and support of innovative material handling and resource recovery solutions since 1977. Our innovative turnkey solutions & life cycle services offering's represent the lowest sustainable cost per ton solutions available on the market.

Our key markets are recycling, energy & quarrying.

Our Strategy

M&K's ambition is to be number one and best in class technology and service provider in all the businesses we are in.

Our Objective

Our objective is to provide our customers with a lifetime of high performance and high profitability based on long term relationships. We endeavour to provide our customers with sustainable value through;

- highest standards of equipment & service
- better process performance
- improved Productivity
- maximum plant availability and reduced downtime.
- best value proposition

Our Values

Our 4 key values are;

- innovative, world class products & systems
- uncompromising customer service
- attention to detail
- long term customer relationships

What can M&K offer?

- Experience, M&K were established in 1977.
- Commitment to establishing & maintaining sustainable long-term customer relationships
- Consultative Approach
- Profound knowledge of customers' processes
- Strong technology know-how
- Service orientated philosophy
- Attention to detail
- Safety
- International reputation of the M&K brand



Why Choose M&K?

Reliability

High Level of Engineering
Persistent quality testing
40 years of experience

High Capacity

the best equipment on the market
Good Reliability
Good Availability

Safety

One button press Stop & Start
CE tracking
Electrical Testing
Distance Guarding
Interlocked Gates
Horizontal Walkways
Safe Access to potential Blocking Points
Safety Signs

Easy to Use & Maintain

One button process start & stop
Real Time Diagnostics
Industry Leading Service

Exporting Quality Globally since 1977



Core Competencies



Process Design

- Profound knowledge of customers' processes
- Strong technology know-how
- Service orientated philosophy

Design principles

- process *the customer's* waste
- Understand material flow
- Fit the budget
- Fit the footprint
- Meet the demands of a changing market & allow for realistic variations
- Recover easy wins: large card, large film
- Be robust and avoid single point of failure
- good access and easy maintenance
- **Low maintenance, fast pre-planned access, minimised task times**

Product Design



For over 35 years M&K Products & Systems have been synonymous with excellent reliability & serviceability

Design principles

- keeping operating costs & life cycle costs down
- maximise system uptime/reduce downtime
- ensuring health & safety compliance

High Capacity

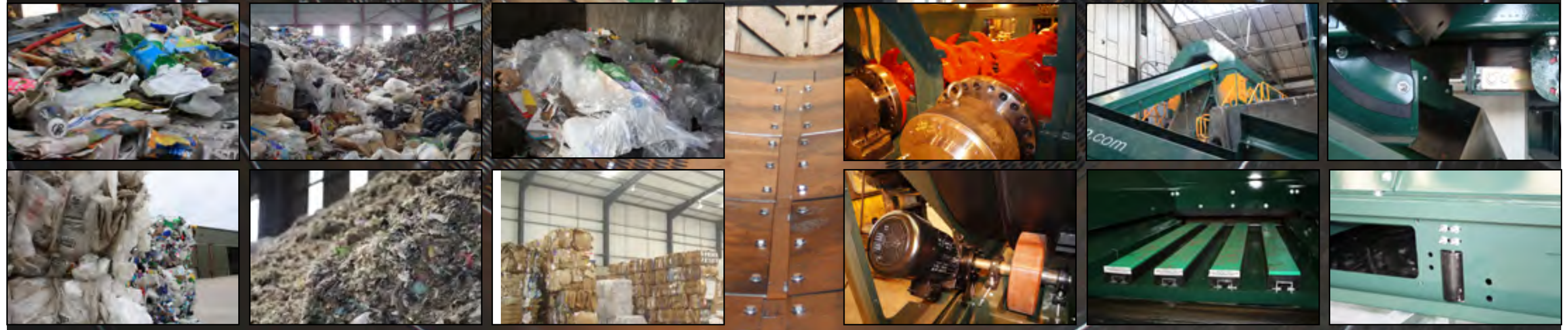
- Proven technology developed over 35 years.
- Engineered to ensure maximum throughput and sustainable customer value.

Reliability

- M&K equipment is purposely 'over engineered' in terms of what application & market requires.
- M&K equipment is designed and manufactured to resist extremely heavy forces.
- M&K equipment has been extensively tested with the hardest applications.
- Simple maintenance & service friendly design ensure reliability
- Standardised components
- Nord drives (Germany)
- Siemens electrical components

Serviceability

- **Low maintenance, fast pre-planned access, minimised task times**



Supporting Customers



MK360 Support

M&K offer our customers 24x7x365 access to a qualified team of technicians, engineers and product & process support resources.

All critical spare parts are held in inventory (including electrical components, PLC's etc).
Spare Parts: 325 Sq Metres (3500 Square Feet)

Support Services

- Operating Instructions
- Safety Instructions
- Safety Signs Explanations
- Unpacking & Inspection Instructions
- Installation Instructions
- Warranty Instructions
- Emergency Stops Instructions
- Functional Layout Explanation
- Operating Principles
- Maintenance Instructions
- Troubleshooting Instructions
- Test Certificates
- Training Certificates
- Parts Books
- Parts Analysis
- *Performance Monitoring and Reporting*
- Extended warranties
- Inspections



ITEM NO.	PART NUMBER	DESCRIPTION	QTY
1	1000-300-432	1/4" Thick 300x432x1/2" Plate	1
2	1000-300-432	1/4" Thick 300x432x1/2" Plate	1
3	1000-300-432	1/4" Thick 300x432x1/2" Plate	1
4	1000-300-432	1/4" Thick 300x432x1/2" Plate	1
5	1000-300-432	1/4" Thick 300x432x1/2" Plate	1
6	1000-300-432	1/4" Thick 300x432x1/2" Plate	1
7	1000-300-432	1/4" Thick 300x432x1/2" Plate	1
8	1000-300-432	1/4" Thick 300x432x1/2" Plate	1
9	1000-300-432	1/4" Thick 300x432x1/2" Plate	1
10	1000-300-432	1/4" Thick 300x432x1/2" Plate	1
11	1000-300-432	1/4" Thick 300x432x1/2" Plate	1
12	1000-300-432	1/4" Thick 300x432x1/2" Plate	1
13	1000-300-432	1/4" Thick 300x432x1/2" Plate	1
14	1000-300-432	1/4" Thick 300x432x1/2" Plate	1
15	1000-300-432	1/4" Thick 300x432x1/2" Plate	1
16	1000-300-432	1/4" Thick 300x432x1/2" Plate	1
17	1000-300-432	1/4" Thick 300x432x1/2" Plate	1
18	1000-300-432	1/4" Thick 300x432x1/2" Plate	1
19	1000-300-432	1/4" Thick 300x432x1/2" Plate	1
20	1000-300-432	1/4" Thick 300x432x1/2" Plate	1
21	1000-300-432	1/4" Thick 300x432x1/2" Plate	1
22	1000-300-432	1/4" Thick 300x432x1/2" Plate	1
23	1000-300-432	1/4" Thick 300x432x1/2" Plate	1
24	1000-300-432	1/4" Thick 300x432x1/2" Plate	1
25	1000-300-432	1/4" Thick 300x432x1/2" Plate	1
26	1000-300-432	1/4" Thick 300x432x1/2" Plate	1
27	1000-300-432	1/4" Thick 300x432x1/2" Plate	1
28	1000-300-432	1/4" Thick 300x432x1/2" Plate	1
29	1000-300-432	1/4" Thick 300x432x1/2" Plate	1
30	1000-300-432	1/4" Thick 300x432x1/2" Plate	1
31	1000-300-432	1/4" Thick 300x432x1/2" Plate	1
32	1000-300-432	1/4" Thick 300x432x1/2" Plate	1
33	1000-300-432	1/4" Thick 300x432x1/2" Plate	1
34	1000-300-432	1/4" Thick 300x432x1/2" Plate	1
35	1000-300-432	1/4" Thick 300x432x1/2" Plate	1
36	1000-300-432	1/4" Thick 300x432x1/2" Plate	1

Control & Management



M&K has its own Automation & Control Department which ensures the design, manufacturing, programming and installation of equipment while adhering to the current standards.

Our team of programmers, technicians and engineers ensure that the control panels are strictly assembled, inspected, installed, commissioned and supported in accordance with M&K quality standards.

M&K have critical spare parts inventory, and our technicians can perform a diagnosis of a system via remote Internet access. Be it a new installation or an update of your current equipment, M&K and its Automation & Control Department has the necessary expertise to professionally advise and serve.



Long Term Commitments to



Substantial investments in Engineering, Manufacturing & Customer Service support our commitment to provide our customers with high quality, reliable & efficient products and service and therefore sustainable value.



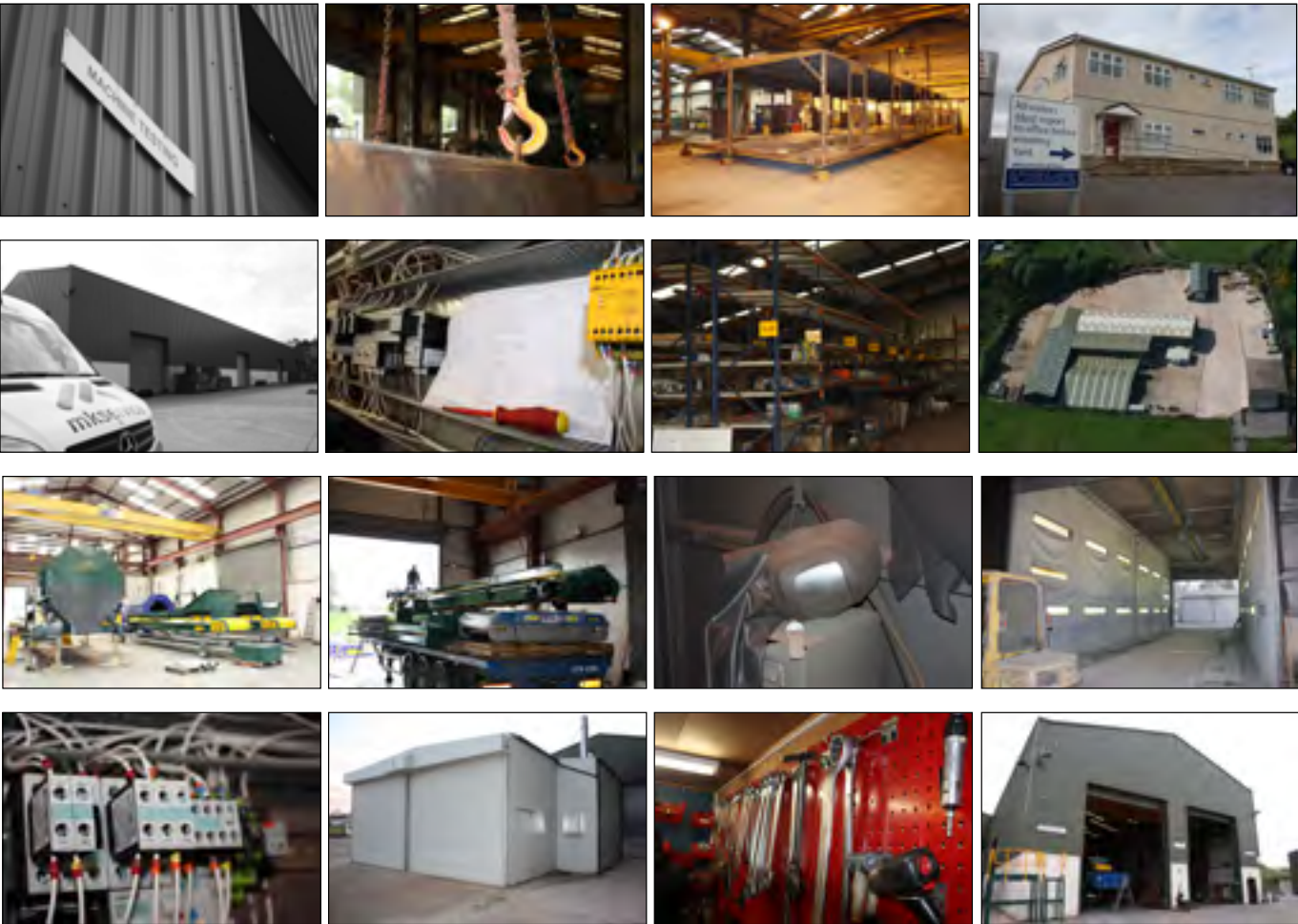
Infrastructure (Key Facts)

- Site: 3 Hectares (7.5 Acres)
- Industrial Buildings: 5500 sq Metres (60000 Sq. Feet)
- Spare Parts: 325 Sq Metres (3500 Square Feet)
- Office Accommodation: 325 Sq Metres (3500 Square Feet)

... provide our Customer's with sustainable value

Industrial Facilities

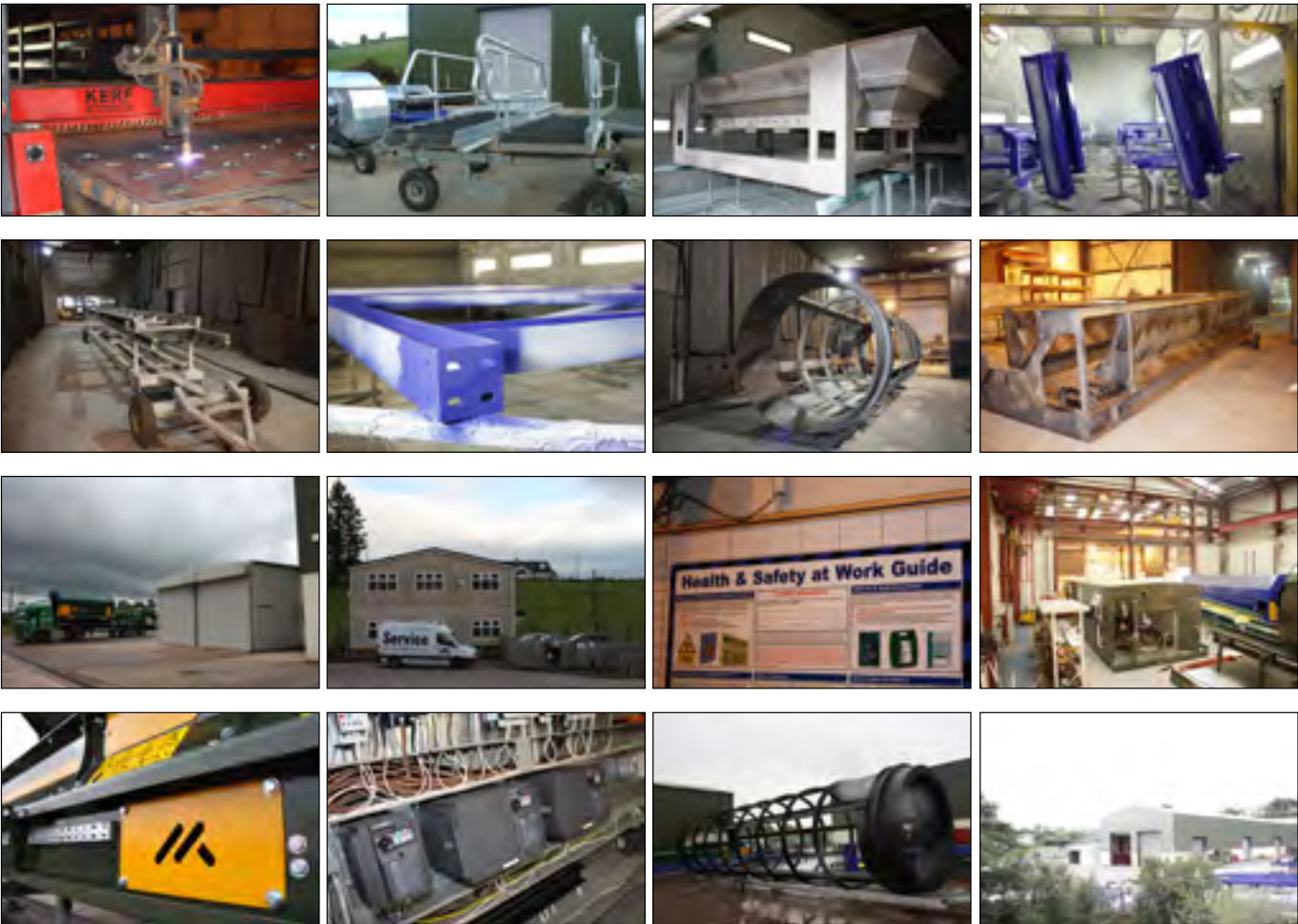
- Laser Cutting
- Fabrication
- Surface Treatment
- Subassembly
- Final Assembly
- Research & Development
- Testing/Quality Control
- Warehousing
- Global Distribution Centre



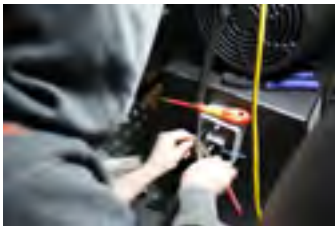
Non Industrial Facilities



- Mechanical Engineering
- Electrical Engineering
- Hydraulic Engineering
- Technical Support
- Procurement
- Production Control
- Quality Control
- Project Management
- Health & Safety
- Services



Quality inherent in our processes



Uncompromising Customer Service

Delivering uncompromising ‘cradle to grave’ customer service is one of the cornerstones of our business model. Understanding our customer’s processes and operational realities is as important as our commitment to the quality and reliability of our extensive solutions

Long Term Performance



We build in the best in terms of long-term performance not only through industry-leading equipment and processes, but also through the best in warranties, extended warranties, inspections, part replacement, maintenance and repair, and training.



Improving Your Business

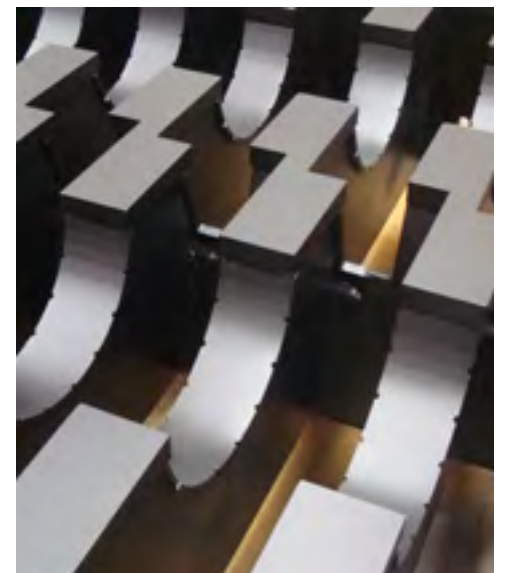
- Better process performance
- Improved Productivity
- Maximum plant availability and reduced downtime
- Low energy consumption
- Low service & maintenance costs
- Higher profits
- Sustainable customer value

Asset Worth Every Penny



M&K is known and respected for its premium quality & performance established over a 30 year period.

The combination of the strong M&K brand, the utilisation of high quality components & the employment of high quality design, manufacture & painting processes ensure that the resale value of M&K equipment remains excellent year after year.





Health, safety and environmental issues are key concerns for M&K, and they are addressed with the same sense of responsibility as quality, productivity and cost-efficiency questions. We have the responsibility to conduct our operations in an environmentally sound way and to offer you products and services that can help you to fulfill your environmental responsibilities.

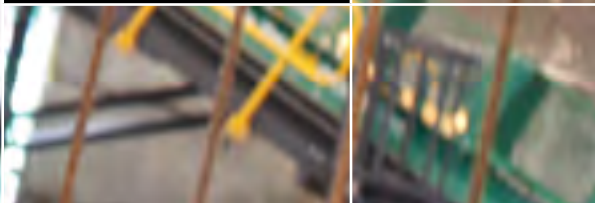
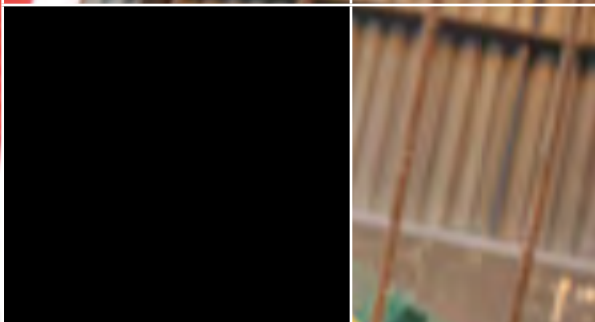
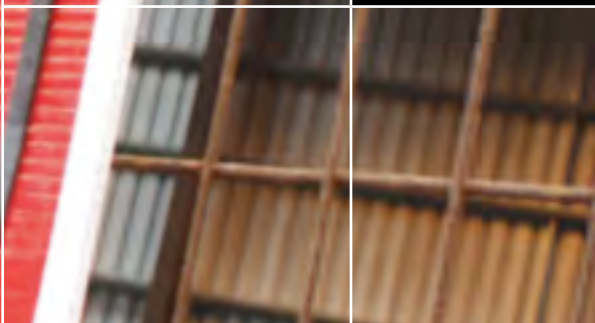
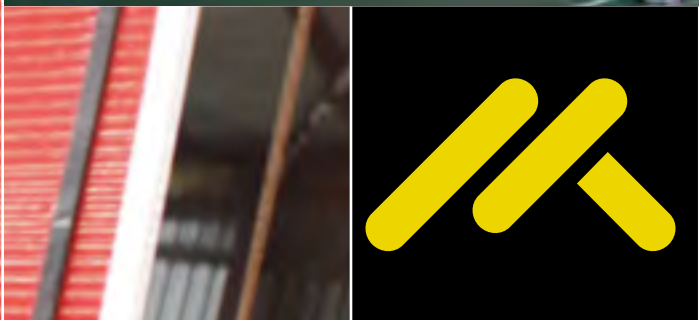
We are committed to develop our entire supply chain in a sustainable and safe way.

Our health, safety and environment mindset:

- All incidents can be prevented. We strive continuously for zero harm to personnel, material and non-material assets
- We focus on employee health and on continuously improving the work environment
- We conduct our operations through efficient use of materials and energy, with minimum waste and damage to the environment
- We design products and services to have no undue environmental impact, to be safe and to be efficient in consuming energy and natural resources
- We seek to ensure that our products can be recycled or disposed of safely

M&K operate a system of continuous safety management review and improvement. Audits, assessments and inspections of our activities and documentation are an integral part of our internal procedures. Available documentation includes:

- Risk Assessments
- COSHH - Material Safety Data Sheets
- Safe Systems of Work
- Accident Procedures
- Method Statements
- Insurance Certificates



Product Offerings



Globally M&K products & systems are synonymous with

- excellent reliability,
- service,
- parts availability,
- long life and
- excellent value.

M&K offer turnkey systems for

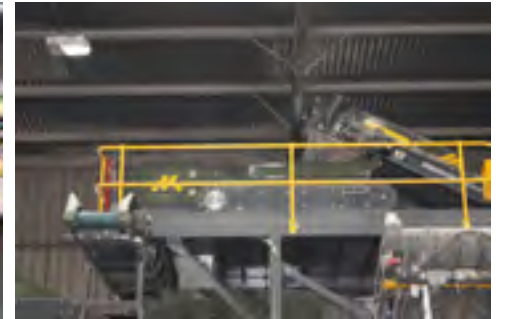
- MSW,
- C&D,
- C&I,
- Waste-to-Energy,
- Co Mingled,
- Wood &
- Organics Processing Solutions.

M&K design, manufacture & support:

- Shredders
- Feeders
- Control Panels
- Conveyors
- Chain Conveyors
- Trommel Screens
- Picking Conveyors
- Eddy Current Separators
- Air Density Separators
- Recovery Cabins
- Welfare Cabins
- Flip Flow Screens
- Screens

M&K supply & support:

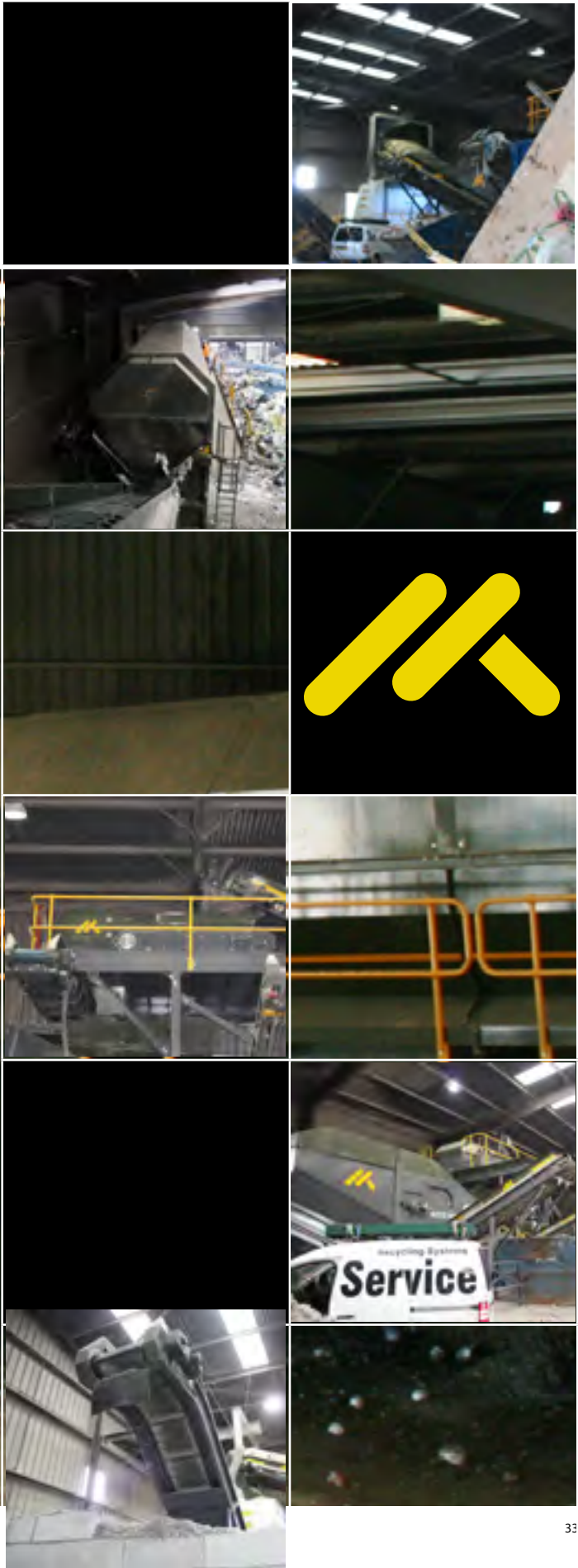
- Ballistic Separators,
- Magnets,
- Balers
- Wrappers
- Optical Sorting Equipment



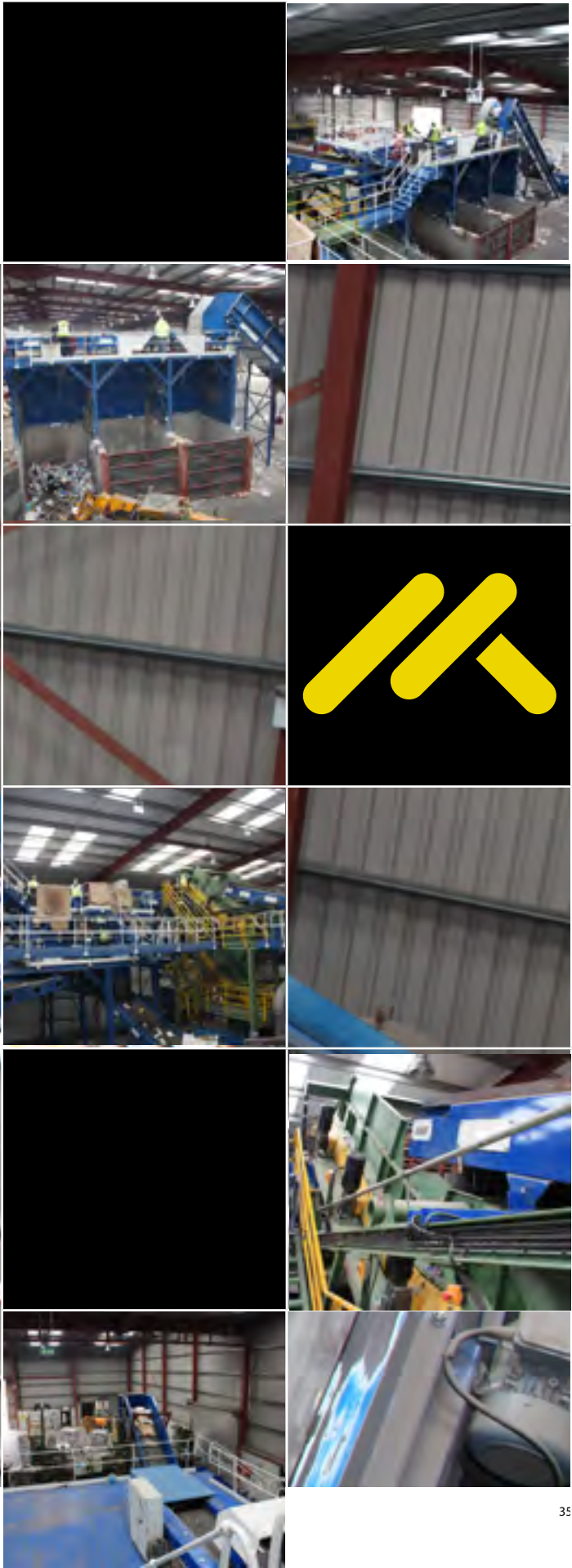
Yorwaste



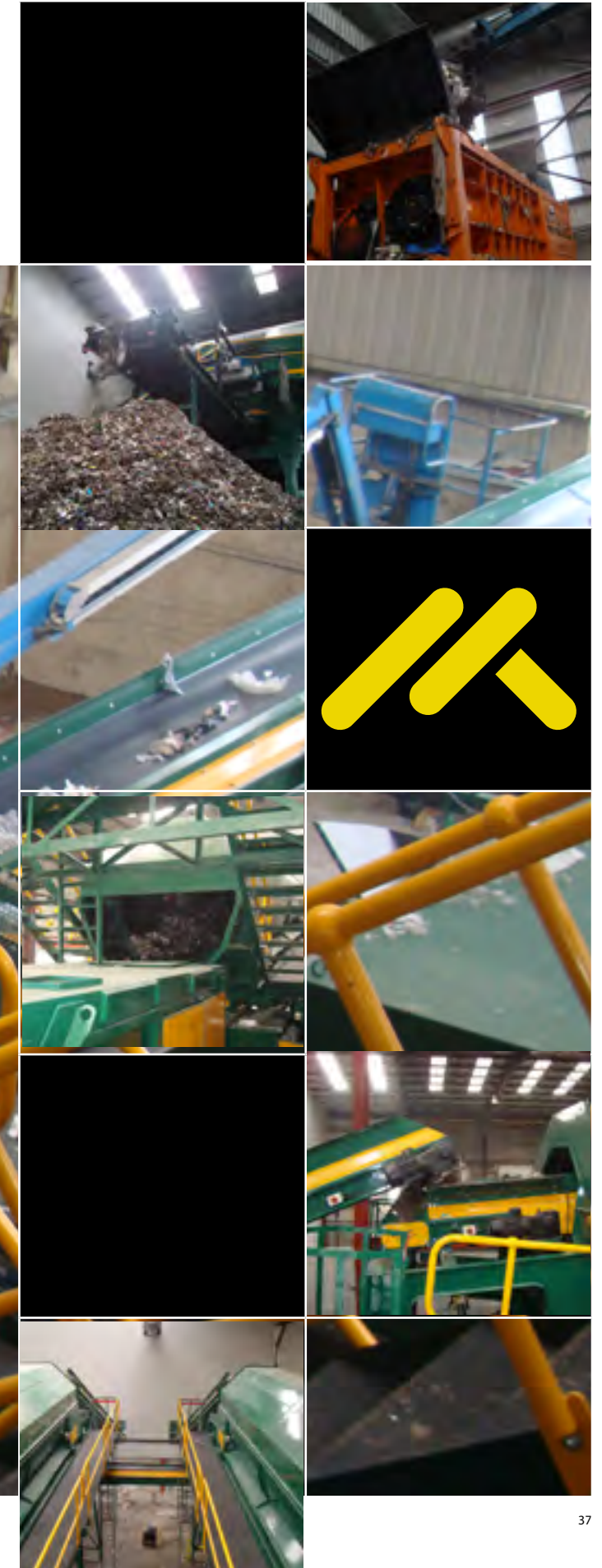
Client:	Yorwaste
Country:	United Kingdom
YOM:	2012
Application:	MSW, C&I, C&D, SRF
Technology:	Feeder, Trommels, Recovery Cabin, Magnets, Eddy Current Separator, Air Density Separator, Pre-Shredder, RDF Shredder, Conveyors
Technology Partners	Untha, M&J
Throughput:	80,000 tpa
Availability:	98%
Service Level:	Preventative. Service Contracts
Value:	1.4M GBP



Client:	Recyco
Country:	Northern Ireland
YOM:	2008
Application:	Co Mingled Waste
Technology:	Chain Conveyor, Recovery Cabin, Magnets, Eddy Current Separator, Star Screens, Optical Sorter, Baler
Technology Partners	Pellenc, Bollegraf
Throughput:	60,000 tpa
Service Level:	Reactive: Parts & Labour
Availability:	96%
Value:	2.0M GBP



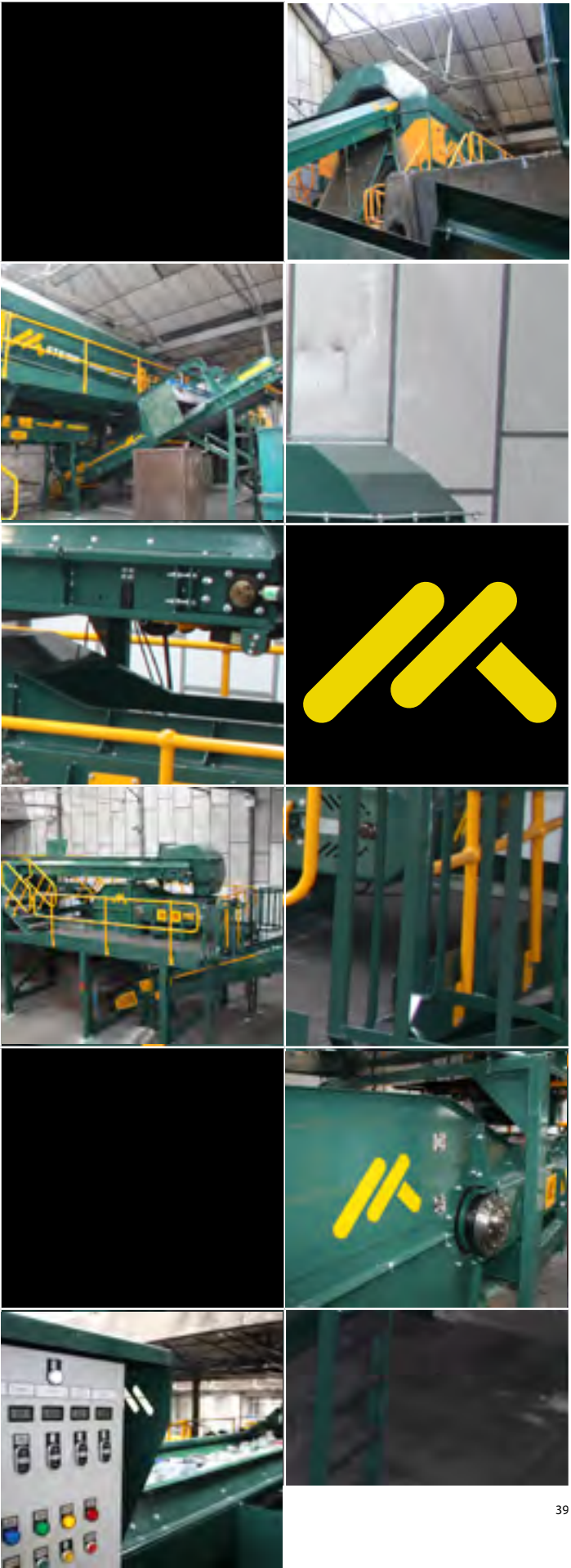
A large industrial shredder machine is shown in a recycling facility. The machine is primarily blue and grey, with a yellow safety railing in the foreground. It is processing waste into small particles. The background shows a concrete wall and a metal structure.



Yorwaste



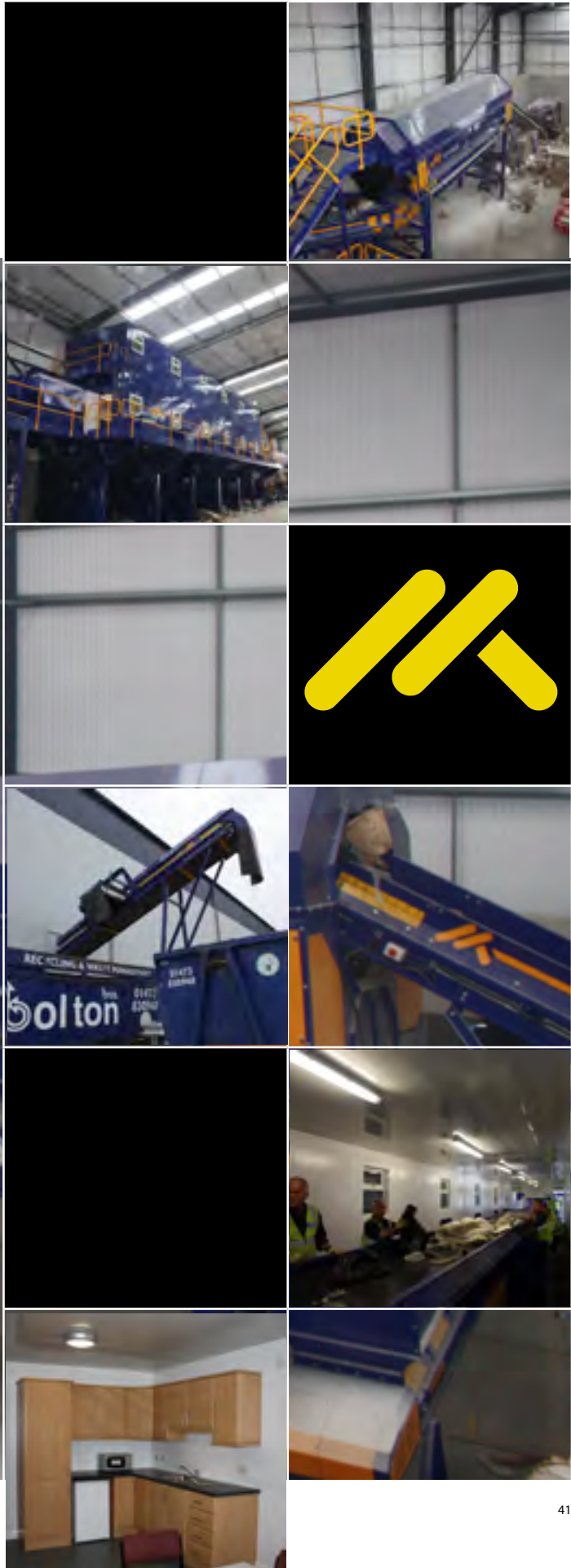
Client:	Yorwaste
Country:	United Kingdom
YOM:	2012
Application:	3D Co Mingled
Technology:	Feeder, Trommel, Magnet, Picking Conveyor, Eddy Current Separator, Conveyors
Technology Partner:	None
Throughput:	20,000 tpa
Service Level:	Preventative. Service Contracts
Availability:	100%
Value:	0.7M GBP



Bolton Bros



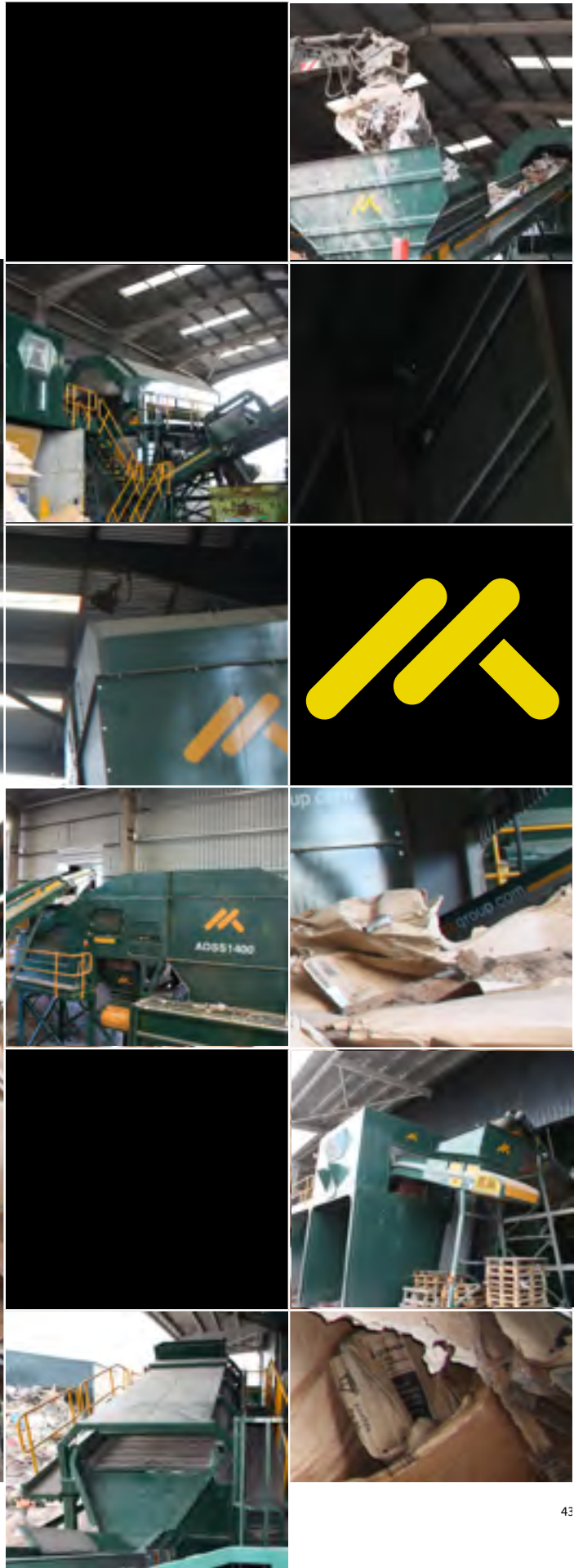
Client:	Bolton Bros
Country:	United Kingdom
YOM:	2012
Application:	Commercial & Industrial Waste
Technology:	Feeder, Trommel, Magnet, Air Separation, Recovery Cabin, Welfare Unit
Technology Parnter:	None
Throughput:	50,000 tpa
Service Level:	Preventative. Service Contracts
Availability:	100%
Value:	0.8M GBP



Grundy

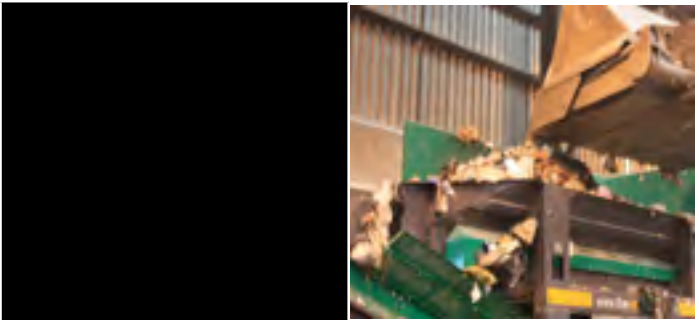
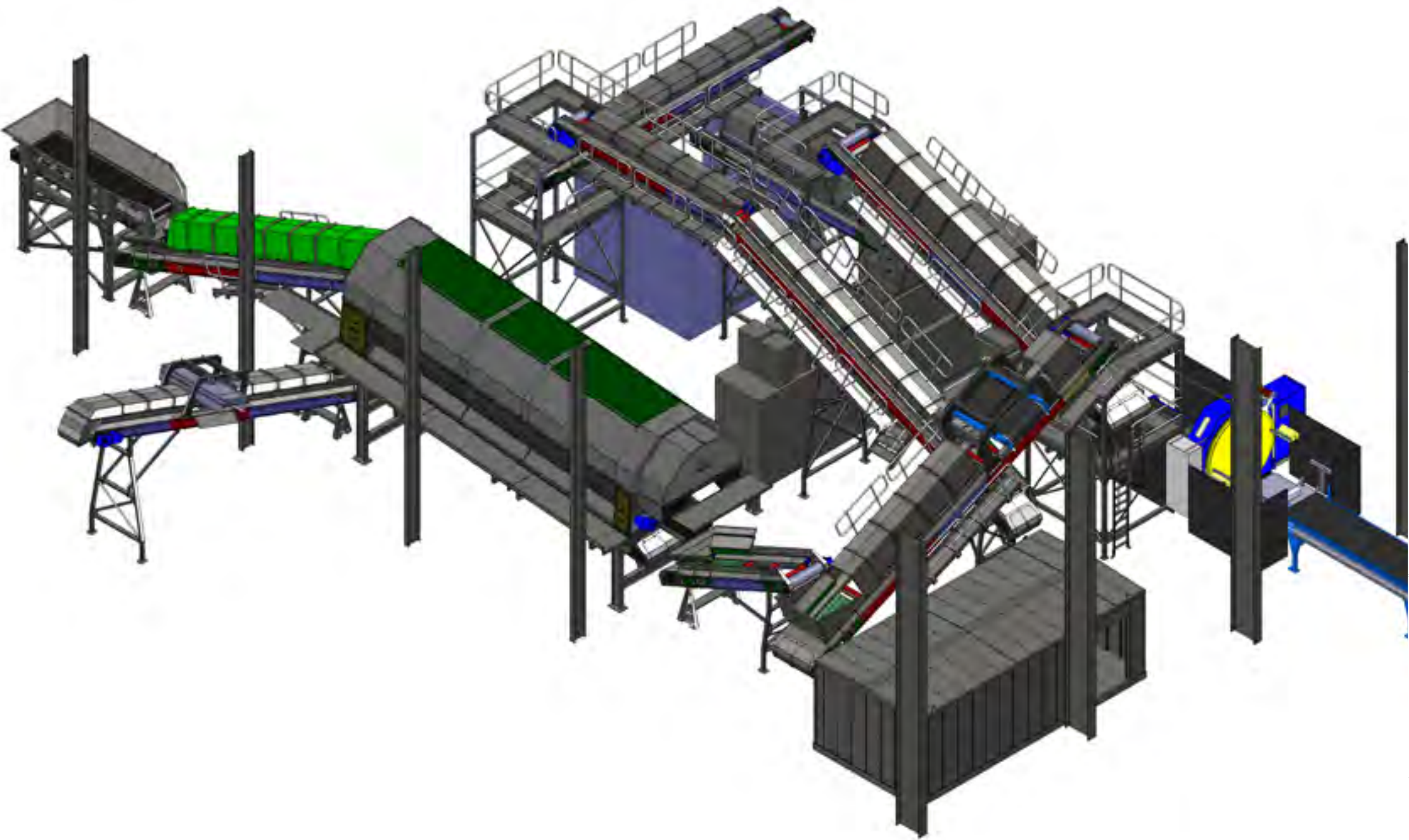


Client:	Grundy
Country:	United Kingdom
YOM:	2012
Application:	C&D
Technology:	Feeder, Trommel, Recovery Cabins, Magnets, Air Density Separation, Flip Flow Screen, Air Separator, Conveyors
Technology Partner:	None
Throughput:	50,000 tpa
Service Level:	Preventative. Service Contracts
Availability:	100%
Value:	1.2M GBP



FCC Environment

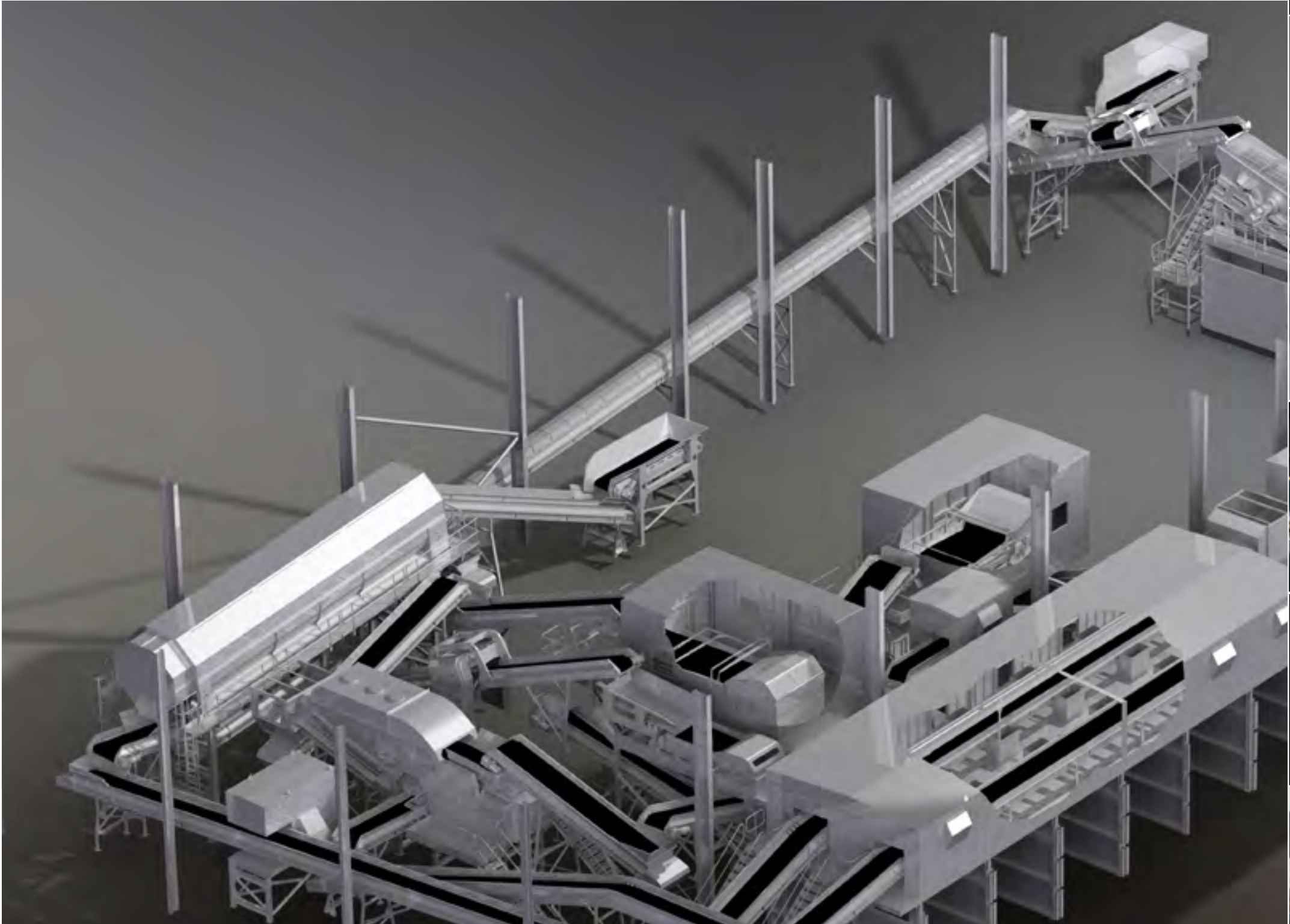
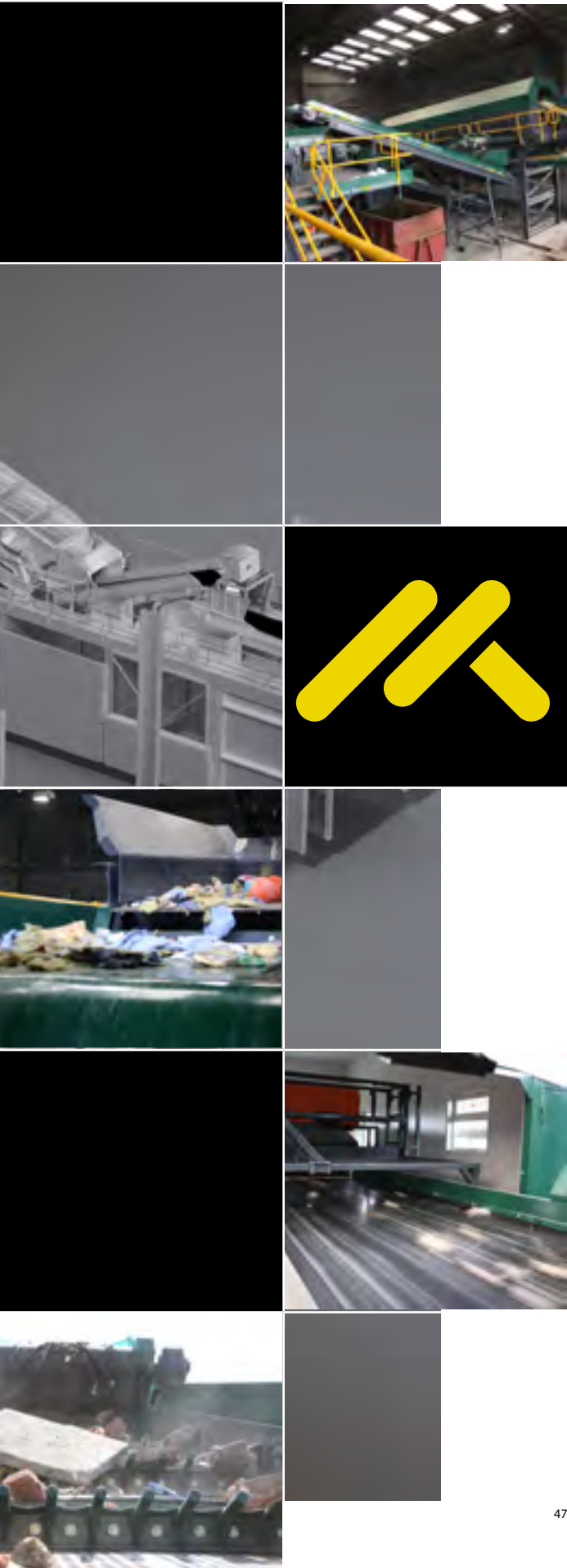
Client:	FCC Environment
Country:	United Kingdom
YOM:	2012
Application:	RDF
Technology:	Feeder, Trommel, Magnet, Baler, Wrapper, Conveyors
Technology Partners:	Paal, CrossWrap
Throughput:	80,000 tpa
Service Level:	Preventative. Service Contracts
Availability:	98%
Value:	1.3M GBP



Spotmix



Client:	Spotmix
Country:	United Kingdom
YOM:	2013
Application:	Residual Waste C&I, Residual C&D, MSW, C&D, C&I
Technology:	Feeder, Trommel, Magnets, Eddy Current Separator, Optical Sorters, Air Density Separator, Conveyors
Technology Partners:	Titec
Throughput:	50,000 tpa
Service Level:	Preventative. Service Contracts
Availability:	99%
Value:	1.7M GBP

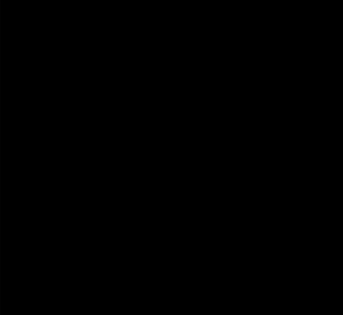
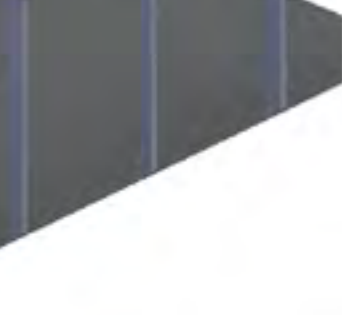
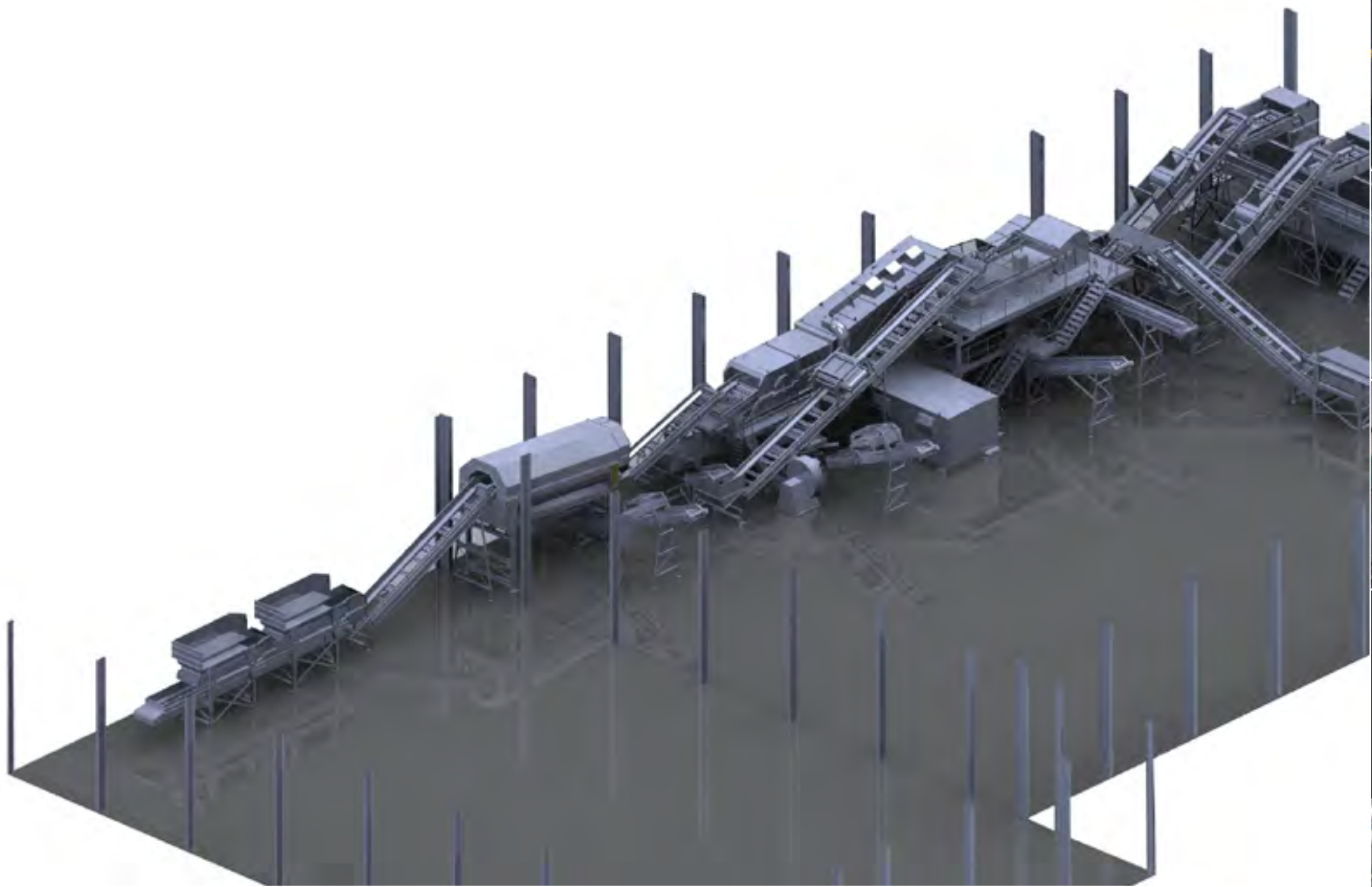


Process more material, minimise downtime, build profitability

Lancashire

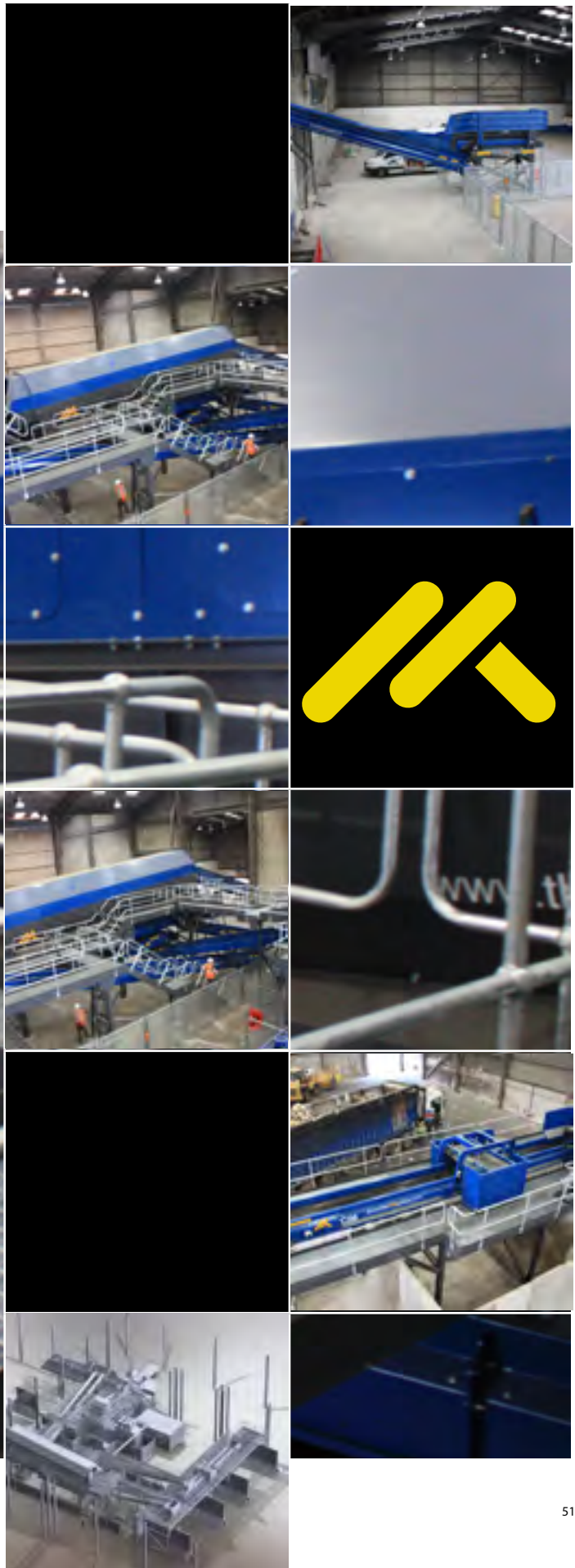


Client:	Lanchasire
Country:	United Kingdom
YOM:	2013
Application:	SRF
Technology:	Feeder, Trommel, Magnets, Eddy Current Separator, Optical Sorter, Air Density Separator, Conveyors, SRF Shredders
Technology Partners:	Untha, Titec
Throughput:	80,000 tpa
Service Level:	Preventative. Service Contracts
Availability:	99%
Value:	3.0M GBP



FCC Environment

Client:	FCC Environment
Country:	United Kingdom
YOM:	2013
Application:	RDF
Technology:	Feeder, Trommel, Magnet, Eddy Current Separator, Optical Sorter, Air Density Separator, Conveyors, SRF Shredders
Technology Partners:	Paal, Crosswrap
Throughput:	80,000 tpa
Service Level:	Preventative. Service Contracts
Availability:	99%
Value:	1.4M GBP





Process more material, minimise downtime, build profitability



M&K,
55 Cappagh Road,
Galbally, Dungannon,
Co Tyrone, N Ireland,
BT70 2PD
t: +44 (0) 2887 758396
f: +44 (0) 2887 758557
e: desmond.rafferty@the-mkgroup.com
www.the-mkgroup.com
facebook.com/mandkgroup
twitter.com/themkgroup